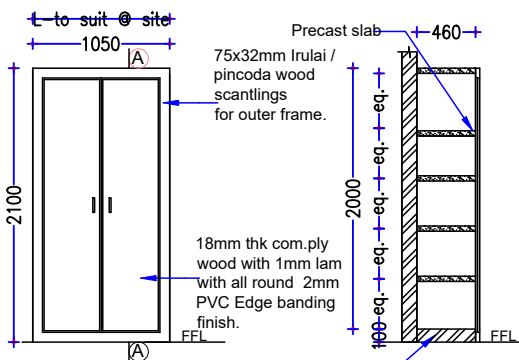


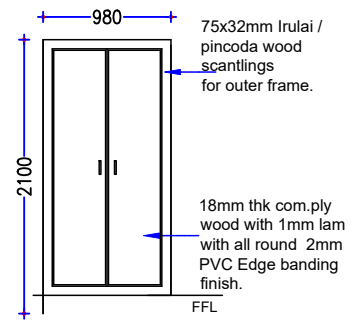
Aluminium Partition with Door  
Size: 1540x2865mm  
Door Size: 900x2100mm - AD  
Schedule Item No: 39(a)

- Furniture Fittings:-**
1. 125mm long Alu. hinges with screws - 4 nos.
  2. 150X200mm Butterfly type handle - 2 nos.
  3. Alu. door stopper with single rod - 1 no.
  4. Lock - 6 lever (Leader brand) - 1 no.
  5. Door bush (Nylon) - 1 no.
  6. Hydraulic door closer (light duty everite make) - 1no.



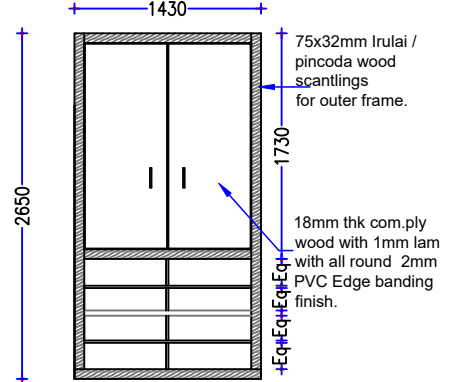
CUPBOARD: CB1  
Size:1620x2100mm  
Schedule item no: 37(a)

- Furniture fittings for CB one unit two shutters**
1. 100mm long SS Cut Hinges - 8Nos.
  2. SS Handle 150mm "D" Type - 2Nos.
  3. Pad lock - 1Nos.
  4. Magnatic Catcher - 3Nos.
  5. 75mm SS Tower Bolt - 1No.



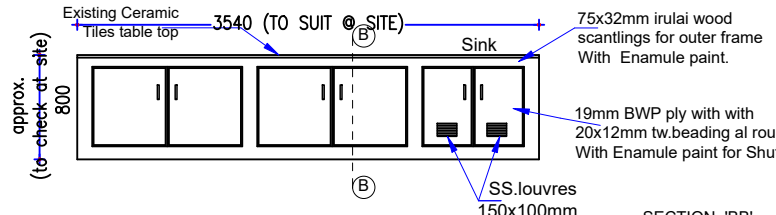
CUPBOARD: CB2  
Size:1620x2100mm  
Schedule Item no: 37a

- Furniture fittings for CB one unit two shutters**
1. 100mm long SS Cut Hinges - 8Nos.
  2. SS Handle 150mm "D" Type - 2Nos.
  3. Pad lock - 1Nos.
  4. Magnatic Catcher - 3Nos.
  5. 75mm SS Tower Bolt - 1No.



CUPBOARD CUM SHOE RACK: CB3  
Size:1620x2100mm  
Schedule Item no: 37(c)

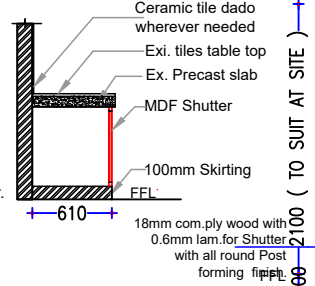
- FURNITURE Fittings For CB one unit two shutters**
1. 100mm long SS Cut Hinges - 8Nos.
  2. SS Handle 150mm "D" Type - 2Nos.
  3. Pad lock - 1Nos.
  4. Magnatic Catcher - 3Nos.
  5. 75mm SS Tower Bolt - 1No.



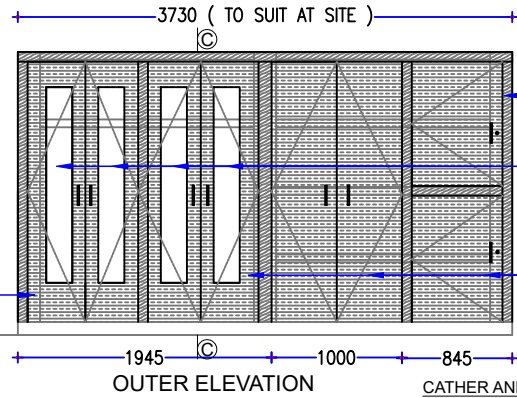
WT / UCB / SINK UNIT ELEVATION

Size: 3540x800mm  
Schedule Item No: 37(d)

- Furniture fittings for UCB one unit two shutters**
1. 75mm long stainless steel hinges with screws - 4Nos.
  2. SS Handle 100mm "D" Type - 2Nos.
  3. Hafele Lock & Key - 1No.
  4. Magnatic Catch - 3Nos.
  5. 75mm SS Tower Bolt - 1No.



SECTION 'BB'

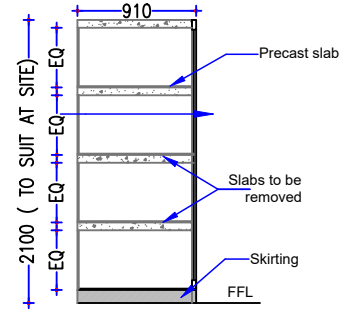


OUTER ELEVATION

CATHER AND DD CUPBOARD: CB  
Size: 3790 x 2070mm  
Schedule Item no: 37(b)

- Furniture Fittings For CB one unit two shutters**
1. 100mm long SS Cut Hinges - 8Nos.
  2. SS Handle 150mm "D" Type - 2Nos.
  3. Pad lock - 1Nos.
  4. Magnatic Catcher - 2Nos.
  5. 75mm SS Tower Bolt - 1No.

- Fittings: (ISI make) for single shutter**
1. 100mm long S.S. hinges with screws - 4nos.
  2. S.S.Handle 150mm "D" type - 1no.
  3. Pad lock - 1no.
  4. Magnetic catcher - 2 nos.



SECTION - CC

DETAILS OF ALU. MEMBERS AS PER JINDAL - CATALOG - 2008					
MEMBER	SECTION NO	SECTION SIZE IN MM	THICKNESS SIZE IN MM	SECTION WEIGHT kg/m	
A	PARTITION / DOOR OUTER FRAME	20073	63.50x38.10	1.95	1.092
B	PARTITION - INTERMEDIATE	20072	63.50x38.10	1.85	1.095
C	DOOR SHUTTER - TOP RAIL	19571	47.62x44.50	1.95	0.974
D	DOOR SHUTTER - VERTICAL	19569	47.62x44.50	2.02	1.052
E	DOOR SHUTTER - LOCK RAIL	19575	49.91x44.50	1.60	0.882
F	DOOR SHUTTER - BOTTOM RAIL	19556	101.60x44.50	2.50	1.943
G	BOX SECTION PLAN	14101	63.50x38.10	1.75	0.974
CLIP FOR HOLDING MDF - BOARD (OR) GLASS		19370		0.80	0.109

- Note:**
1. All dimensions are in mm.
  2. All alu. fittings are of ISI make. unless otherwise mentioned.
  3. All wood are free from knots & whites of first quality.
  4. 1.5mm planning tolerance on each wrought face is permitted.
  5. All sizes mentioned are approximate to suit site conditions and as per actual measurements.
  6. All exposed teak wood beadings are to be polished with sheenlac french polishing to a satisfactory finish.
  7. MDF OSL./BSL. Board material shall be of duratuff exterior grade or equivalent make.
  8. All glass 4mm/5mm thick plain glass/frosted of MODII/ Saint Gobain appd. equivalent.

TENDER PURPOSE ONLY

**CHRISTIAN MEDICAL COLLEGE -VELLORE.**

MODIFICATION OF EXISTING P1 & P2 LAB TO CATH LAB IN MAIN BUILDING GROUND FLOOR AT CMC TOWN CAMPUS

GROUND FLOOR PLAN (PART) JOINERY DETAILS

CHKD BY: DEVAGI	DATE : 04/06/2024	PLANNING ENGINEER
DRAWN: YAMUNA	DRG.NO: CMC/GF/C/J1	